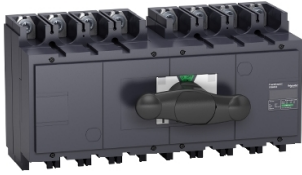


Product datasheet

Specifications



complete manual source
changeover assembly. FXM400.
Compact INS400 switch
disconnectors. 400 A. 4 poles

31151

Price: 23,246.04 ZAR

Main

Range Of Product	INS320...630
Range	TransferPacT ComPact
Device Short Name	INS400
Product Or Component Type	Manual transfer switch
Device Application	Change source of supply
Range Compatibility	ComPact ComPacT INS INS400 switch disconnector
Poles Description	4P
Network Type	AC DC
Network Frequency	50/60 Hz
Mounting Mode	Fixed
Upside Connection	Front
Downside Connection	Front
Suitability For Isolation	Yes
Contact Position Indicator	Yes
[Icm] Rated Short-Circuit Making Capacity	330 kA with upstream protection circuit breaker 690 V AC at 50/60 Hz 50 kA switch-disconnector alone 690 V AC at 50/60 Hz

Complementary

Transfer Switch Class	PC
Number Of Contact Position	3
Control Type	Direct front rotary handle
Operating Mode	Manual
Mounting Support	Rail Plate
Locking Options Description	Padlocking in OFF position

Excluding VAT and subject to change. Please check with your local distributor through "Where to buy"

[Ie] Rated Operational Current	AC-22A: 400 A AC 50/60 Hz 220/240 V AC-22A: 400 A AC 50/60 Hz 380/415 V AC-22A: 400 A AC 50/60 Hz 440/480 V AC-22A: 400 A AC 50/60 Hz 500/525 V AC-22A: 400 A AC 50/60 Hz 660/690 V AC-23A: 400 A AC 50/60 Hz 220/240 V AC-23A: 400 A AC 50/60 Hz 380/415 V AC-23A: 400 A AC 50/60 Hz 440/480 V AC-23A: 400 A AC 50/60 Hz 500/525 V AC-23A: 400 A AC 50/60 Hz 660/690 V DC-22A: 400 A DC 125 V 2 poles in series DC-23A: 400 A DC 125 V 2 poles in series DC-22A: 400 A DC 250 V 4 poles in series DC-23A: 400 A DC 250 V 4 poles in series
[Ith] Conventional Free Air Thermal Current	400 A at 60 °C
Rated Duty	Uninterrupted
Intermittent Duty Class	Class 120 - 60 %
[Ui] Rated Insulation Voltage	750 V AC 50/60 Hz
[Uimp] Rated Impulse Withstand Voltage	8 kV
[Ue] Rated Operational Voltage	690 V AC 50/60 Hz conforming to IEC 60947-3 250 V DC conforming to IEC 60947-3
Mechanical Interlocking	With mechanical interlocking
Mechanical Durability	10000 cycles
Electrical Durability	AC-22A: 1500 cycles 440 V AC 50/60 Hz AC-22A: 1500 cycles 500 V AC 50/60 Hz AC-22A: 1500 cycles 690 V AC 50/60 Hz AC-23A: 1500 cycles 440 V AC 50/60 Hz AC-23A: 1500 cycles 500 V AC 50/60 Hz AC-23A: 1500 cycles 690 V AC 50/60 Hz DC-23A: 1000 cycles 250 V DC 4 poles in series
Connection Pitch	45 mm
[Icw] Rated Short-Time Withstand Current	11.5 kA during 3 s conforming to IEC 60947-3 20 kA during 1 s conforming to IEC 60947-3 4 kA during 30 s conforming to IEC 60947-3 4.9 kA during 20 s conforming to IEC 60947-3
Height	205 mm
Width	395 mm
Depth	155 mm
Net Weight	13.5 kg

Environment

Standards	IEC 60947-3 IEC 60947-1
Product Certifications	CB
Electrical Shock Protection Class	Class II
Ip Degree Of Protection	IP40 conforming to IEC 60947-3
Pollution Degree	3
Ambient Air Temperature For Operation	-25...70 °C
Ambient Air Temperature For Storage	-50...85 °C

Packing Units

Unit Type Of Package 1	PCE
-------------------------------	-----

Number Of Units In Package 1	1
Package 1 Height	20 cm
Package 1 Width	23 cm
Package 1 Length	50 cm
Package 1 Weight	15 kg

Contractual warranty

Warranty	18 months
----------	-----------

Sustainability

Green Premium™ label is Schneider Electric's commitment to delivering products with best-in-class environmental performance. Green Premium promises compliance with the latest regulations, transparency on environmental impacts, as well as circular and low-CO₂ products.

Guide to assessing product sustainability is a white paper that clarifies global eco-label standards and how to interpret environmental declarations.

[Learn more about Green Premium >](#)

[Guide to assess a product's sustainability >](#)



RoHS/REACH

Well-being performance

Mercury Free

Rohs Exemption Information Yes

Certifications & Standards

Reach Regulation [REACH Declaration](#)

Eu Rohs Directive Compliant with Exemptions

China Rohs Regulation [China RoHS declaration](#)
Product out of China RoHS scope. Substance declaration for your information

Weee The product must be disposed on European Union markets following specific waste collection and never end up in rubbish bins