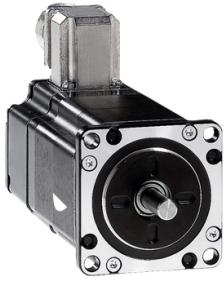


Product datasheet

Specifications



3-phase stepper motor - 1.70 Nm - shaft Ø8 mm - L=79 mm - without brake - wire

BRS368H130AAA

Price: 5,207.75 ZAR

Main

Range Compatibility	Lexium SD3
Product Or Component Type	Motion control motor
Device Short Name	BRS3
Maximum Mechanical Speed	3000 rpm
Motor Type	3-phase stepper motor
Number Of Motor Poles	6
Supply Voltage Limits	34 V DC 48 V DC
Mounting Support	Flange
Motor Flange Size	57.2 mm
Length	79 mm
Centring Collar Diameter	38 mm

Complementary

Centring Collar Depth	1.6 mm
Number Of Mounting Holes	4
Mounting Holes Diameter	5.2 mm
Circle Diameter Of The Mounting Holes	66.6 mm
Electrical Connection	Flying leads
Holding Brake	Without
Shaft End	Smooth shaft
Second Shaft	Without second shaft end
Shaft Diameter	8 mm
Shaft Length	21 mm
Nominal Torque	1.5 N.m
Holding Torque	1.7 N.m
Rotor Inertia	0.38 kg.cm ²
Resolution	1.8 °, 0.9 °, 0.72 °, 0.36 °, 0.18 °, 0.09 °, 0.072 °, 0.036 ° step angle 200, 400, 500, 1000, 2000, 4000, 5000, 10000 steps number of full steps per revolution
Accuracy Error	+/- 6 arc min
Maximum Starting Frequency	6 kHz

Excluding VAT and subject to change. Please check with your local distributor through "Where to buy"

[In] Rated Current	5.8 A
Resistance	0.7 Ohm (winding)
Time Constant	4.6 ms
Maximum Radial Force Fr	50 N (first shaft end) 40 N (second shaft end)
Maximum Axial Force Fa	100 N (tensile force) 8.4 N (force pressure)
Service Life In Hours	20000 h (bearing)
Angular Acceleration	200000 rad/s ²
Net Weight	2 kg

Environment

Standards	IEC 50347 IEC 60072-1
Type Of Cooling	Natural convection
Ambient Air Temperature For Operation	-25...40 °C
Ambient Air Temperature For Storage	-25...70 °C
Operating Altitude	<= 1000 m without power derating
Relative Humidity	15...85 % without condensation
Vibration Resistance	20 m/s ² maximum A conforming to IEC 60034-14
Ip Degree Of Protection	IP56 total except shaft bushing: conforming to IEC 60034-5 IP41 shaft bushing without shaft seal ring: conforming to IEC 60034-5
Temperature Class	F winding conforming to IEC 60034-1

Packing Units

Unit Type Of Package 1	PCE
Number Of Units In Package 1	1
Package 1 Height	10.500 cm
Package 1 Width	17.000 cm
Package 1 Length	24.500 cm
Package 1 Weight	1.397 kg
Unit Type Of Package 2	P06
Number Of Units In Package 2	36
Package 2 Height	75.000 cm
Package 2 Width	60.000 cm
Package 2 Length	80.000 cm
Package 2 Weight	58.972 kg

Contractual warranty

Warranty	18 months
-----------------	-----------

Sustainability

Green Premium™ label is Schneider Electric's commitment to delivering products with best-in-class environmental performance. Green Premium promises compliance with the latest regulations, transparency on environmental impacts, as well as circular and low-CO₂ products.

Guide to assessing product sustainability is a white paper that clarifies global eco-label standards and how to interpret environmental declarations.

[Learn more about Green Premium >](#)

[Guide to assess a product's sustainability >](#)



Transparency RoHS/REACH

Well-being performance

Mercury Free

RoHS Exemption Information Yes

Pvc Free

Certifications & Standards

Reach Regulation [REACH Declaration](#)

Eu RoHS Directive Pro-active compliance (Product out of EU RoHS legal scope)

China RoHS Regulation [China RoHS declaration](#)

Environmental Disclosure [Product Environmental Profile](#)

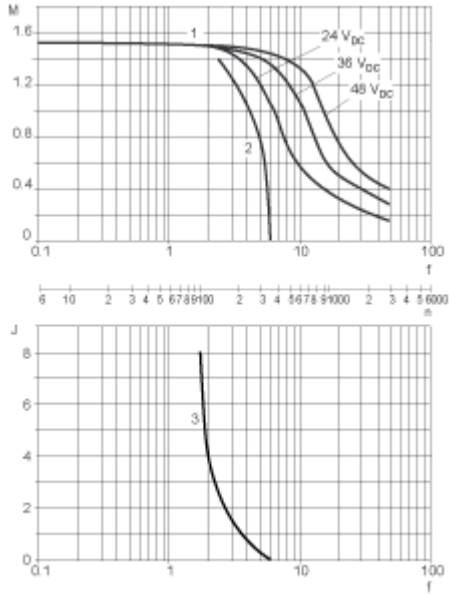
Weee The product must be disposed on European Union markets following specific waste collection and never end up in rubbish bins

Circularity Profile No need of specific recycling operations

Performance Curves

Torque Characteristics

Measurement at 1000 Steps/Revolution, Nominal Voltage DC Bus U_N and Phase Current I_N



- M : Torque in Nm
- n : Speed in rpm
- f : Frequency in kHz
- J : Rotor inertia in kg.cm²
- 1 : Pull-out torque
- 2 : Pull-in torque
- 3 : Maximum load inertia