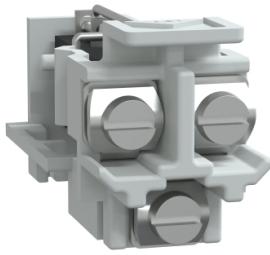


Product datasheet

Specifications



Auxiliary contact kit, GoPact MTS 100, 2 NO/NC contacts, ON/OFF indication

GMSAUXCK01

Main

Range Of Product	GoPact MTS
Product Or Component Type	Auxiliary contact
Device Application	Monitoring
Range Compatibility	GoPact MTS 100
Product Compatibility	switch disconnecter 63...100 A
Frame Size	1
Signal Contacts Composition	2 NO/NC for on/off indication

Complementary

Mounting Mode	Clip-on
[Ith] Conventional Free Air Thermal Current	10 A
[Ue] Rated Operational Voltage	415 V AC
[Ie] Rated Operational Current	AC-15: 4 A at 415 V AC 50/60 Hz
Minimum Load	1 A
Mechanical Durability	50000 cycles
Auxiliary Connection Terminal	Screw terminal

Packing Units

Unit Type Of Package 1	PCE
Number Of Units In Package 1	1
Package 1 Height	8.5 cm
Package 1 Width	3.2 cm
Package 1 Length	12 cm
Package 1 Weight	61 g
Unit Type Of Package 2	S02
Number Of Units In Package 2	2
Package 2 Height	15 cm
Package 2 Width	30 cm
Package 2 Length	40 cm
Package 2 Weight	0.522 kg

Excluding VAT and subject to change. Please check with your local distributor through "Where to buy"

Sustainability

Green Premium™ label is Schneider Electric's commitment to delivering products with best-in-class environmental performance. Green Premium promises compliance with the latest regulations, transparency on environmental impacts, as well as circular and low-CO₂ products.

Guide to assessing product sustainability is a white paper that clarifies global eco-label standards and how to interpret environmental declarations.

[Learn more about Green Premium >](#)

[Guide to assess a product's sustainability >](#)



Transparency RoHS/REACH

Well-being performance

Reach Free Of Svhc

Mercury Free

Rohs Exemption Information [Yes](#)

Pvc Free

Certifications & Standards

Reach Regulation

[REACH Declaration](#)

Eu Rohs Directive

Compliant

[EU RoHS Declaration](#)

China Rohs Regulation

[China RoHS declaration](#)

Pro-active China RoHS declaration (out of China RoHS legal scope)

Environmental Disclosure

[Product Environmental Profile](#)

Weee

The product must be disposed on European Union markets following specific waste collection and never end up in rubbish bins

Circularity Profile

[End of Life Information](#)