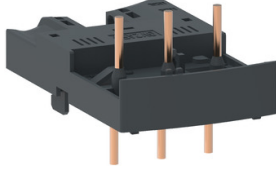


# Product datasheet

Specifications



## TeSys GV2 - Combination blocks - with LAD311 and contactor LC1D09...D38

GV2AF4

**Price: 444.51 ZAR**

### Main

Range	Linergy
Product Name	FT
Device Short Name	GV2AF
Product Or Component Type	Combination block
Accessory / Separate Part Category	Connection accessory
Range Compatibility	TeSys GV2 TeSys TeSys Deca

### Complementary

Product Compatibility	LC1D09...D38 Adaptor plate
Poles Description	3P
Quantity Per Set	Set of 10
Net Weight	0.016 kg

### Packing Units

Unit Type Of Package 1	PCE
Number Of Units In Package 1	1
Package 1 Height	4.000 cm
Package 1 Width	4.500 cm
Package 1 Length	7.500 cm
Package 1 Weight	18.000 g
Unit Type Of Package 2	BB1
Number Of Units In Package 2	10
Package 2 Height	9.500 cm
Package 2 Width	10.000 cm
Package 2 Length	15.000 cm
Package 2 Weight	234.000 g
Unit Type Of Package 3	S03
Number Of Units In Package 3	140
Package 3 Height	30.000 cm
Package 3 Width	30.000 cm

Excluding VAT and subject to change. Please check with your local distributor through "Where to buy"

---

Package 3 Length	40.000 cm
------------------	-----------

---

Package 3 Weight	3.750 kg
------------------	----------

## Contractual warranty

---

Warranty	18 months
----------	-----------

## Sustainability

**Green Premium™ label** is Schneider Electric's commitment to delivering products with best-in-class environmental performance. Green Premium promises compliance with the latest regulations, transparency on environmental impacts, as well as circular and low-CO<sub>2</sub> products.

**Guide to assessing product sustainability** is a white paper that clarifies global eco-label standards and how to interpret environmental declarations.

[Learn more about Green Premium >](#)

[Guide to assess a product's sustainability >](#)



Transparency RoHS/REACH

## Well-being performance

Reach Free Of Svhc

---

Toxic Heavy Metal Free

---

Mercury Free

---

Rohs Exemption Information Yes

---

## Certifications & Standards

**Reach Regulation** [REACH Declaration](#)

---

**Eu Rohs Directive** Compliant  
[EU RoHS Declaration](#)

---

**China Rohs Regulation** [China RoHS declaration](#)

---

**Environmental Disclosure** [Product Environmental Profile](#)

---

**Weee** The product must be disposed on European Union markets following specific waste collection and never end up in rubbish bins

---

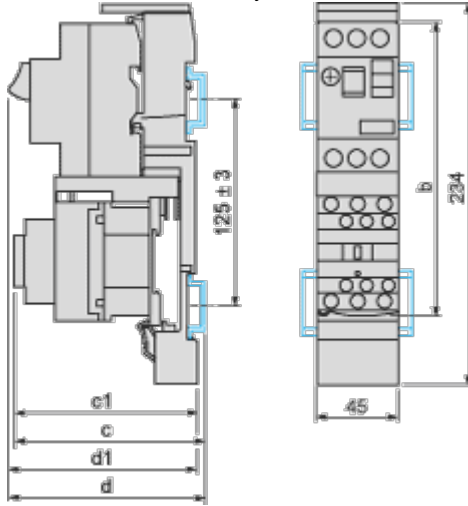
**Circularity Profile** [End of Life Information](#)

---

Dimensions Drawings

**GV2AF4 + LAD311**

Combination GV2ME + TeSys d contactor



GV2ME +	LC1D09...D18	LC1D25 and D32
b	176.4	186.8
c1	103.1	136.4
c	135.6	141.9
d1	107	107
d	112.5	112.5