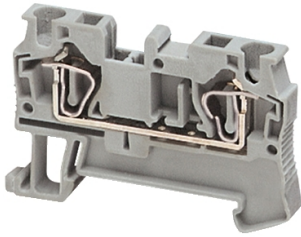


Product datasheet

Specifications



SPRING TERMINAL. FEED THROUGH. 2 POINTS. 4MM². GREY

NSYTRR42

Price: 35.63 ZAR

Main

Range	Lineryg
Product Name	Lineryg TR
Product Or Component Type	Terminal block
Device Short Name	TRR
Accessory / Separate Part Categor	Connection accessory
Terminal Block Type	Passthrough
Terminal Block Level	1
Mounting Mode	Clip-on
Nominal Cross Section	4 mm ²
Length	56 mm
Colour	Grey
Quantity Per Set	Set of 50

Complementary

Width	6.2 mm
Height	36.5 mm
Connections - Terminals	1 x spring terminal: upstream 1 x spring terminal: downstream
Number Of Connections	2
Connection Position	Top
Number Of Measurement Input	2
Cable Cross Section	0.08...4 mm ² , solid without cable end 0.08...4 mm ² , flexible without cable end 0.08...6 mm ² , solid with cable end 0.2...4 mm ² , flexible with cable end
Wire Stripping Length	10 mm
Tool Type	Connection: flat screwdriver Disconnection: flat screwdriver
[Ue] Rated Operational Voltage	600 V CSA 800 V conforming to EN/IEC 60947-7-1 600 V cURus
[In] Rated Current	32 A conforming to EN/IEC 60947-7-1 30 A CSA 30 A cURus

Excluding VAT and subject to change. Please check with your local distributor through "Where to buy"

Material	Polyamide 6/6: insulating case Copper alloy: connector and screw Copper alloy: commoning link Chromium-nickel steel: spring
Dielectric Loss	0.01 at 1 MHz conforming to IEC 60250 0.01 at 1 MHz conforming to VDE 0303-T4
Dielectric Constant	3.7 at 1 MHz
Resistivity	10000 M Ω .m conforming to IEC 60093 10000 M Ω .m conforming to VDE 0303-T30
Surface Resistance	1000 G Ω conforming to IEC 60093 1000 G Ω conforming to VDE 0303-T30
Creep Resistance	500 CTI (> 400 kB) conforming to IEC 60093 500 CTI (> 400 kB) conforming to VDE 0303-T30
Flame Retardance	V0, thickness 0.8 mm conforming to UL 94
Net Weight	6.5 g
Range Compatibility	Prisma G Prisma P Prisma PH Prisma Pack Spacial Kaedra Pragma TeSys
Product Compatibility	Spacial enclosures

Environment

Product Certifications	IEC-Ex VDE cURus EAC LR CSA DNV ATEX GL
Dielectric Strength	1000 V conforming to IEC 60243-1
Ambient Air Temperature For Operation	-40...130 °C conforming to IEC 60216-1 -40...130 °C conforming to VDE 0304-T21

Packing Units

Unit Type Of Package 1	PCE
Number Of Units In Package 1	1
Package 1 Height	0.500 cm
Package 1 Width	3.600 cm
Package 1 Length	5.600 cm
Package 1 Weight	8.000 g
Unit Type Of Package 2	BB2
Number Of Units In Package 2	50
Package 2 Height	4.600 cm
Package 2 Width	6.700 cm
Package 2 Length	31.700 cm
Package 2 Weight	435.000 g

Unit Type Of Package 3	S03
Number Of Units In Package 3	1200
Package 3 Height	30.000 cm
Package 3 Width	30.000 cm
Package 3 Length	40.000 cm
Package 3 Weight	7.800 kg

Contractual warranty

Warranty	18 months
-----------------	-----------

Sustainability

Green Premium™ label is Schneider Electric's commitment to delivering products with best-in-class environmental performance. Green Premium promises compliance with the latest regulations, transparency on environmental impacts, as well as circular and low-CO₂ products.

Guide to assessing product sustainability is a white paper that clarifies global eco-label standards and how to interpret environmental declarations.

[Learn more about Green Premium >](#)

[Guide to assess a product's sustainability >](#)



Transparency RoHS/REACH

Well-being performance

✓ Reach Free Of Svhc

✓ Toxic Heavy Metal Free

✓ Mercury Free

✓ Rohs Exemption Information Yes

✓ Halogen Free Plastic Parts Product

Certifications & Standards

Reach Regulation

[REACH Declaration](#)

Eu Rohs Directive

Pro-active compliance (Product out of EU RoHS legal scope)

[EU RoHS Declaration](#)

China Rohs Regulation

[China RoHS declaration](#)

Pro-active China RoHS declaration (out of China RoHS legal scope)

Environmental Disclosure

[Product Environmental Profile](#)

Circularity Profile

No need of specific recycling operations