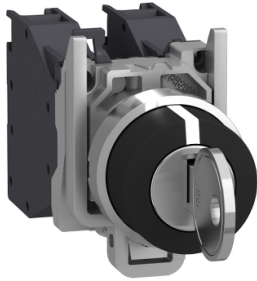


# Product datasheet

Specifications



Complete selector switch.  
Harmony XB4. Explosive  
atmosphere. 455 Key switch with 3  
positions stay put

XB4BG03GEX

**Price: 3,363.06 ZAR**

## Main

Range Of Product	Harmony XB4
Product Or Component Type	Complete selector switch
Device Short Name	XB4
Bezel Material	Chromium plated metal
Fixing Collar Material	Zamak
Mounting Diamete	22 mm
Sale Per Indivisible Quantity	1
Dust Zone	Zone 21 - 22
Gas Zone	Zone 1 - 2
Type Of Operator	stay put
Operator Profile	key switch
Key Number	455
Contacts Type And Composition	2 NO

## Complementary

Width	46.2 mm
Height	30 mm
Depth	110 mm
Net Weight	0.176 kg
Device Mounting	Fixing hole - diameter: 22.5 mm +/- 0.2 mm conforming to IEC 60947-1
Fixing Center	>= 30 x 40 mm (support panel) - thickness: 1...6 mm
Embedding Depth	58 mm
Marking	Ex db eb IIC Gb II 2 GD Ex tb IIIC Db
Shape Of Signaling Unit Head	Round
Operator Position Information	3 positions +/- 45°
Key Withdrawal Position	In any position
Contact Operation	Slow-break
Contacts Usage	Standard contacts
Positive Opening	Without
Mechanical Durability	5000000 cycles

Excluding VAT and subject to change. Please check with your local distributor through "Where to buy"

<b>Connections - Terminals</b>	Screw clamp terminals, 2 x 1.5 mm <sup>2</sup> with cable end conforming to IEC 60947-1 Screw clamp terminals, 1 x 2.5 mm <sup>2</sup> without cable end conforming to IEC 60947-1
<b>Tightening Torque</b>	0.8...1.2 N.m conforming to IEC 60947-1
<b>[Ith] Conventional Free Air Thermal Current</b>	10 A conforming to IEC 60947-5-1
<b>[Uij] Rated Insulation Voltage</b>	415 V
<b>[Ie] Rated Operational Current</b>	1.9 A at 380 V, AC, A600 conforming to IEC 60947-5-1 3 A at 240 V, AC, A600 conforming to IEC 60947-5-1 6 A at 120 V, AC, A600 conforming to IEC 60947-5-1 0.27 A at 250 V, DC, Q300 conforming to IEC 60947-5-1 0.55 A at 125 V, DC, Q300 conforming to IEC 60947-5-1 2.87 A at 24 V, DC, Q300 conforming to IEC 60947-5-1

## Environment

<b>Protective Treatment</b>	TH
<b>Ambient Air Temperature For Storage</b>	-40...70 °C
<b>Ambient Air Temperature For Operation</b>	-20...75 °C
<b>Ip Degree Of Protection</b>	IP66 conforming to IEC 60529
<b>Standards</b>	IEC 60079-0:2009 EN/IEC 60079-1:2009 IEC 60079-7:2009 IEC 60079-31:2009 UL 60079-0 UL 60079-1 UL 60079-31 ANSI/ISA 12.12.01 CSA C22.2 No 213
<b>Product Certifications</b>	INERIS 04ATEX9004U

## Packing Units

<b>Unit Type Of Package 1</b>	PCE
<b>Number Of Units In Package 1</b>	1
<b>Package 1 Height</b>	11.0 cm
<b>Package 1 Width</b>	3.0 cm
<b>Package 1 Length</b>	4.6 cm
<b>Package 1 Weight</b>	180.0 g
<b>Unit Type Of Package 2</b>	S03
<b>Number Of Units In Package 2</b>	25
<b>Package 2 Height</b>	30.0 cm
<b>Package 2 Width</b>	30.0 cm
<b>Package 2 Length</b>	40.0 cm
<b>Package 2 Weight</b>	4.841 kg

## Sustainability

**Green Premium™ label** is Schneider Electric's commitment to delivering products with best-in-class environmental performance. Green Premium promises compliance with the latest regulations, transparency on environmental impacts, as well as circular and low-CO<sub>2</sub> products.

**Guide to assessing product sustainability** is a white paper that clarifies global eco-label standards and how to interpret environmental declarations.

[Learn more about Green Premium >](#)

[Guide to assess a product's sustainability >](#)



Transparency RoHS/REACH

## Well-being performance

Mercury Free

RoHS Exemption Information Yes

## Certifications & Standards

Reach Regulation [REACH Declaration](#)

Eu RoHS Directive Pro-active compliance (Product out of EU RoHS legal scope)

China RoHS Regulation [China RoHS declaration](#)

Environmental Disclosure [Product Environmental Profile](#)

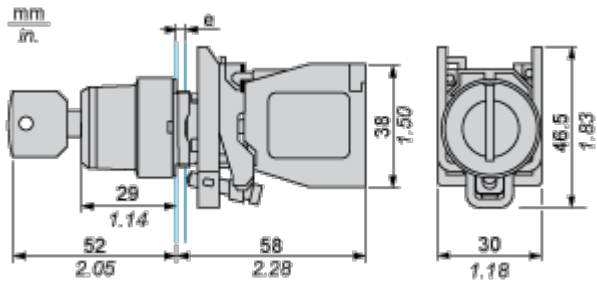
Weee The product must be disposed on European Union markets following specific waste collection and never end up in rubbish bins

Circularity Profile [End of Life Information](#)

Dimensions Drawings

Dimensions

---

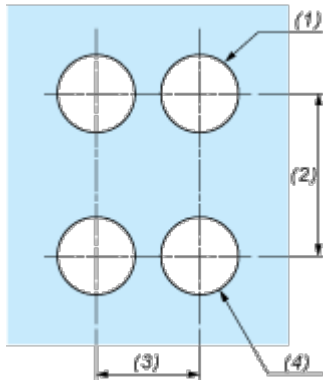


e : support thickness: 1 to 6 mm / 0.04 to 0.24 in.

## Mounting and Clearance

**Panel Cut-out for Pushbuttons, Switches and Pilot Lights (Finished Holes, Ready for Installation)**

---

**Connection by Screw Clamp Terminals**

- (1) Diameter on finished panel or support
- (2) 40 mm min. / 1.57 in. min.
- (3) 30 mm min. / 1.18 in. min.
- (4)  $\text{Ø } 22.5 \text{ mm} / 0.89 \text{ in. recommended } (\text{Ø } 22.3 \text{ mm }_0^{+0.4} / 0.88 \text{ in. }_0^{+0.016})$