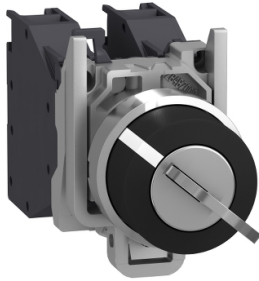


Product datasheet

Specifications



Complete selector switch.
Harmony XB4. Explosive
atmosphere. 455 Key switch with 2
positions free at left/right

XB4BG41GEX

Price: 2,293.00 ZAR

Main

| | |
|-------------------------------|--------------------------|
| Range Of Product | Harmony XB4 |
| Product Or Component Type | Complete selector switch |
| Device Short Name | XB4 |
| Bezel Material | Chromium plated metal |
| Fixing Collar Material | Zamak |
| Mounting Diamete | 22 mm |
| Sale Per Indivisible Quantity | 1 |
| Dust Zone | Zone 21 - 22 |
| Gas Zone | Zone 1 - 2 |
| Type Of Operator | stay put |
| Operator Profile | key switch |
| Key Number | 455 |
| Contacts Type And Composition | 1 NO |

Complementary

| | |
|-------------------------------|--|
| Width | 46.2 mm |
| Height | 30 mm |
| Depth | 110 mm |
| Net Weight | 0.158 kg |
| Device Mounting | Fixing hole - diameter: 22.5 mm +/- 0.2 mm conforming to IEC 60947-1 |
| Fixing Center | >= 30 x 40 mm (support panel) - thickness: 1...6 mm |
| Embedding Depth | 58 mm |
| Marking | Ex tb IIIC Db Ex db eb IIC Gb II 2 GD |
| Shape Of Signaling Unit Head | Round |
| Operator Position Information | 2 positions 90° |
| Key Withdrawal Position | In any position |
| Contact Operation | Slow-break |
| Contacts Usage | Standard contacts |
| Positive Opening | Without |
| Mechanical Durability | 5000000 cycles |

Excluding VAT and subject to change. Please check with your local distributor through "Where to buy"

| | |
|--|--|
| Connections - Terminals | Screw clamp terminals, 2 x 1.5 mm ² with cable end conforming to IEC 60947-1 Screw clamp terminals, 1 x 2.5 mm ² without cable end conforming to IEC 60947-1 |
| Tightening Torque | 0.8...1.2 N.m conforming to IEC 60947-1 |
| [Ith] Conventional Free Air Thermal Current | 10 A conforming to IEC 60947-5-1 |
| [Uij] Rated Insulation Voltage | 415 V |
| [Ie] Rated Operational Current | 1.9 A at 380 V, AC, A600 conforming to IEC 60947-5-1 3 A at 240 V, AC, A600 conforming to IEC 60947-5-1 6 A at 120 V, AC, A600 conforming to IEC 60947-5-1 0.27 A at 250 V, DC, Q300 conforming to IEC 60947-5-1 0.55 A at 125 V, DC, Q300 conforming to IEC 60947-5-1 2.87 A at 24 V, DC, Q300 conforming to IEC 60947-5-1 |

Environment

| | |
|--|--|
| Protective Treatment | TH |
| Ambient Air Temperature For Storage | -40...70 °C |
| Ambient Air Temperature For Operation | -20...75 °C |
| Ip Degree Of Protection | IP66 conforming to IEC 60529 |
| Standards | IEC 60079-0:2009 EN/IEC 60079-1:2009 IEC 60079-7:2009 IEC 60079-31:2009 UL 60079-0 UL 60079-1 UL 60079-31 ANSI/ISA 12.12.01 CSA C22.2 No 213 |
| Product Certifications | INERIS 04ATEX9004U |

Packing Units

| | |
|-------------------------------------|----------|
| Unit Type Of Package 1 | PCE |
| Number Of Units In Package 1 | 1 |
| Package 1 Height | 11.0 cm |
| Package 1 Width | 3.0 cm |
| Package 1 Length | 4.6 cm |
| Package 1 Weight | 180.0 g |
| Unit Type Of Package 2 | S03 |
| Number Of Units In Package 2 | 40 |
| Package 2 Height | 30.0 cm |
| Package 2 Width | 30.0 cm |
| Package 2 Length | 40.0 cm |
| Package 2 Weight | 7.481 kg |

Sustainability

Green Premium™ label is Schneider Electric's commitment to delivering products with best-in-class environmental performance. Green Premium promises compliance with the latest regulations, transparency on environmental impacts, as well as circular and low-CO₂ products.

Guide to assessing product sustainability is a white paper that clarifies global eco-label standards and how to interpret environmental declarations.

[Learn more about Green Premium >](#)

[Guide to assess a product's sustainability >](#)



Transparency RoHS/REACH

Well-being performance

Mercury Free

RoHS Exemption Information Yes

Certifications & Standards

Reach Regulation [REACH Declaration](#)

Eu RoHS Directive Pro-active compliance (Product out of EU RoHS legal scope)

China RoHS Regulation [China RoHS declaration](#)

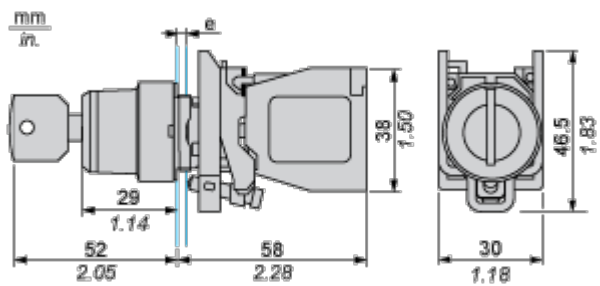
Environmental Disclosure [Product Environmental Profile](#)

Weee The product must be disposed on European Union markets following specific waste collection and never end up in rubbish bins

Circularity Profile [End of Life Information](#)

Dimensions Drawings

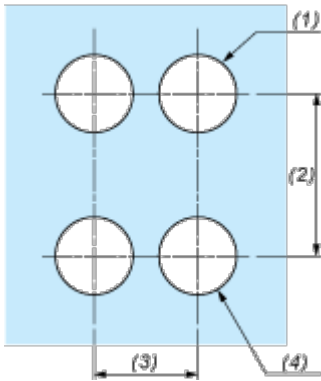
Dimensions



e : support thickness: 1 to 6 mm / 0.04 to 0.24 in.

Mounting and Clearance

Panel Cut-out for Pushbuttons, Switches and Pilot Lights (Finished Holes, Ready for Installation)

Connection by Screw Clamp Terminals

- (1) Diameter on finished panel or support
- (2) 40 mm min. / 1.57 in. min.
- (3) 30 mm min. / 1.18 in. min.
- (4) $\text{Ø } 22.5 \text{ mm} / 0.89 \text{ in. recommended } (\text{Ø } 22.3 \text{ mm }_0^{+0.4} / 0.88 \text{ in. }_0^{+0.016})$