

# Product datasheet

Specifications



## Harmony XAC. Double contact block. spring return. front mounting. single speed C/O

XESD1181

**Price: 2,676.03 ZAR**

### Main

Range Of Product	Harmony XAC
Product Or Component Type	Contact block
Component Name	XESD
Electrical Circuit Type	Control circuit
Contact Block Application	Single speed
Contact Block Type	Double
Type Of Operator	2 spring return
Product Compatibility	XACB XACM
Mechanical Interlocking	With mechanical interlocking
Mounting Of Block	Front mounting
Contact Operation	Snap action

### Complementary

Connections - Terminals	Screw clamp terminals, 1 x 2.5 mm <sup>2</sup> with or without cable end Screw clamp terminals, 2 x 1.5 mm <sup>2</sup> with or without cable end
Mechanical Durability	1000000 cycles
Contact Code Designation	A300 AC-15, U <sub>e</sub> = 240 V, I <sub>e</sub> = 3 A conforming to IEC 60947-5-1 appendix A Q300 DC-13, U <sub>e</sub> = 250 V, I <sub>e</sub> = 0.27 A conforming to IEC 60947-5-1 appendix A
[I <sub>the</sub> ] Conventional Enclosed Thermal Current	10 A
[U <sub>i</sub> ] Rated Insulation Voltage	500 V (pollution degree 3) conforming to IEC 60947-1
[U <sub>imp</sub> ] Rated Impulse Withstand Voltage	6 kV conforming to IEC 60947-1
Maximum Resistance Across Terminals	25 MOhm
Operating Force	15 N 25 N
Short-Circuit Protection	10 A fuse protection by cartridge fuse type gG
Rated Operational Power In W	140 W DC-13 for 1000000 cycles, operating rate <60 cyc/mn at 24 V, load factor = 0.5 (inductive load) conforming to IEC 60947-5-1 appendix C 140 W DC-13 for 1000000 cycles, operating rate <60 cyc/mn at 48 V, load factor = 0.5 (inductive load) conforming to IEC 60947-5-1 appendix C 95 W DC-13 for 1000000 cycles, operating rate <60 cyc/mn at 120 V, load factor = 0.5 (inductive load) conforming to IEC 60947-5-1 appendix C

Excluding VAT and subject to change. Please check with your local distributor through "Where to buy"

<b>Rated Operational Power In Va</b>	100 VA AC-15 for 1000000 cycles, operating rate <60 cyc/mn at 48 V 50/60 Hz, load factor = 0.5 (inductive load) 450 VA AC-15 for 1000000 cycles, operating rate <60 cyc/mn at 127 V 50/60 Hz, load factor = 0.5 (inductive load) 50 VA AC-15 for 1000000 cycles, operating rate <60 cyc/mn at 24 V 50/60 Hz, load factor = 0.5 (inductive load) 750 VA AC-15 for 1000000 cycles, operating rate <60 cyc/mn at 230 V 50/60 Hz, load factor = 0.5 (inductive load)
<b>Terminals Description Iso N°1</b>	B (13-14-11-12)OF
<b>Terminals Description Iso N°2</b>	B (23-24-21-22)OF
<b>Terminal Identifier</b>	(13-14)NO (11-12)NC

## Environment

<b>Standards</b>	CSA C22.2 No 14 EN 60947-5-1 IEC 60947-5-1
<b>Ambient Air Temperature For Operation</b>	-25...70 °C
<b>Ambient Air Temperature For Storage</b>	-40...70 °C
<b>Vibration Resistance</b>	15 gn (f= 10...500 Hz) conforming to IEC 60068-2-6
<b>Shock Resistance</b>	100 gn conforming to IEC 60068-2-27
<b>Electrical Shock Protection Class</b>	Class II conforming to IEC 61140

## Packing Units

<b>Unit Type Of Package 1</b>	PCE
<b>Number Of Units In Package 1</b>	1
<b>Package 1 Height</b>	7.1 cm
<b>Package 1 Width</b>	7.2 cm
<b>Package 1 Length</b>	8.9 cm
<b>Package 1 Weight</b>	156.0 g
<b>Unit Type Of Package 2</b>	S02
<b>Number Of Units In Package 2</b>	10
<b>Package 2 Height</b>	15.0 cm
<b>Package 2 Width</b>	30.0 cm
<b>Package 2 Length</b>	40.0 cm
<b>Package 2 Weight</b>	1.99 kg

## Contractual warranty

<b>Warranty</b>	18 months
-----------------	-----------

## Sustainability

**Green Premium™ label** is Schneider Electric's commitment to delivering products with best-in-class environmental performance. Green Premium promises compliance with the latest regulations, transparency on environmental impacts, as well as circular and low-CO<sub>2</sub> products.

**Guide to assessing product sustainability** is a white paper that clarifies global eco-label standards and how to interpret environmental declarations.

[Learn more about Green Premium >](#)

[Guide to assess a product's sustainability >](#)

## Well-being performance

✓ Reach Free Of Svhc

---

✓ Toxic Heavy Metal Free

---

✓ Mercury Free

---

✓ Rohs Exemption Information [Yes](#)

---

**Reach Regulation** [REACH Declaration](#)

---

**Eu Rohs Directive** Pro-active compliance (Product out of EU RoHS legal scope)  
[EU RoHS Declaration](#)

---

**China Rohs Regulation** [China RoHS declaration](#)

---

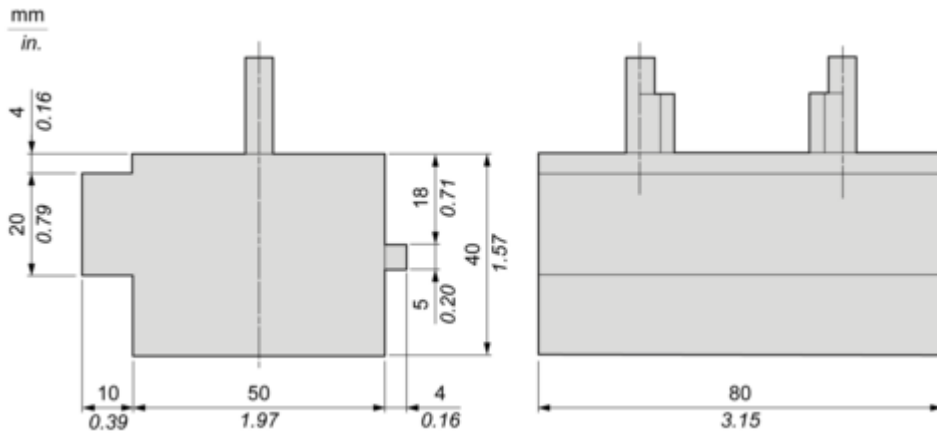
**Weee** The product must be disposed on European Union markets following specific waste collection and never end up in rubbish bins

---

Dimensions Drawings

Dimensions

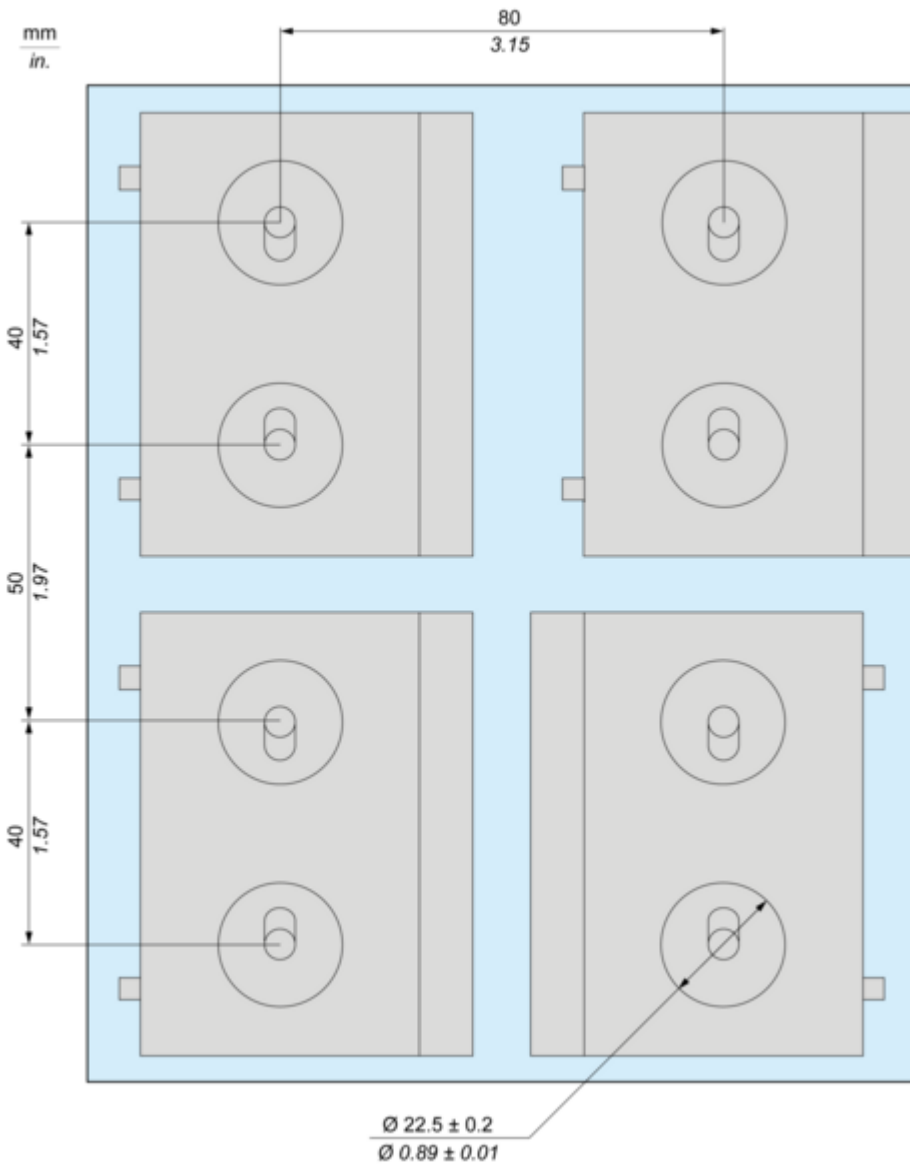
---



Mounting and Clearance

Mounting

---



Performance Curves

**Rated Operational Power**

---

**AC Supply 50/60 Hz**

Operating rate: 3600 operating cycles/hour. Load factor: 0.5.

**Power broken in VA for 1 million operating cycles, AC-15 utilization category**

Voltage	V	24	48	127	230
Inductive circuit	W	50	100	450	750

**DC Supply**

Operating rate: 3600 operating cycles/hour. Load factor: 0.5.

**Power broken in W for 1 million operating cycles, DC-13 utilization category**

Voltage	V	24	48	120
Inductive circuit	W	140	140	95