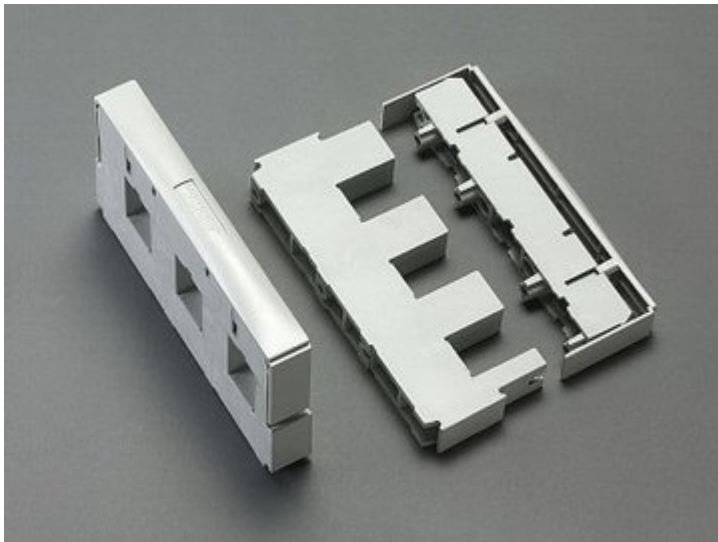


## busbar support (01231)



### Description

Part No.: 01231  
busbar support  
3-pole, with internal screw holes  
for double T profile  
for busbars double-T section

### System

60Classic

**Product group** 06

**Subgroup** 09

**pack size** 3

**EAN** 4021267012311

### Advantages of the product

Suitable as outer and centre supports  
with internal screw holes.

eCl@ss 6.1 27400607  
eCl@ss 7.1 27400607  
ETIM 4.0 EC001166  
ETIM 5.0 EC001166

## Approvals

### Standards

IEC 61439-1:2011  
GB/T 7251.1

### Approvals

CSA, UL, DNV GL



for UL feeder circuits >250V

type number: S630-L

UL file: E123577, UL category (for USA): NMTR <http://www.ul.com>

UL file: E123577, UL category (for Canada): NMTR7 <http://www.ul.com>

CSA file: 110285, CSA class: 3211-37 <http://directories.csa-international.org>

CCC approval: no certification required

## Product data

### Details IEC

#### Standards

IEC 61439-1:2011  
GB/T 7251.1

#### Electrical data IEC

rated voltage (IEC) AC: 690 V

rated frequency (IEC): 50 / 60 Hz

rated isolation voltage  $U_i$  AC: 1000 V

rated surge voltage  $U_{imp}$  : 8 kV

The insulation performance of the article depends on the installation conditions.

power dissipation of the article:

The power dissipation at a typical load of 80% of the rated current results to 0 W.

(The power dissipation for operation with rated current would be 0 W.)

### Supplementary data IEC

The following values have been verified with tests under certain conditions. Please ask Wöhner for this conditions before designing your panel.

max. permitted voltage (IEC) DC: 1500 V

rated peak withstand current  $I_{pk}$  max.: 91 kA

short-circuit capacity IEC / EN :

$I_{pk}$  max. = 91 kA (busbar TT 720mm<sup>2</sup>, 2 busbar supports in 500 mm distance)

go to calculation for [3-pole system \(IEC\)](#)

### Details UL

#### Standards

UL 508

for UL feeder circuits >250V

### Electrical data UL

rated voltage (UL) AC: 600 V

rated frequency (UL): 50 / 60 Hz

SCCR unprotected max.: 30 kA

3 cycles (without OPD) @ 600 V AC

SCCR protected max.: 200 kA

see downloads

**Mechanical data**

W x H x D: 25 x 200 x 123  
weight: 59.1 kg/100  
poles: 3-pole  
for busbars: double-T section

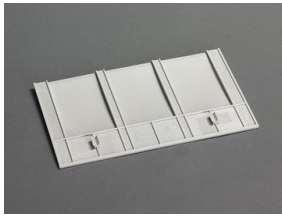
**Material properties**

Main body: temperature stability 125°C,  
self-extinguishing in acc. to UL 94,  
creepage resistance CTI 600,  
halogen-free  
Screws: screw +/- (PZ2), galvanized, chromized

**Reference**

Torque for the screws of the busbar support  $M_d = 4\text{Nm}$

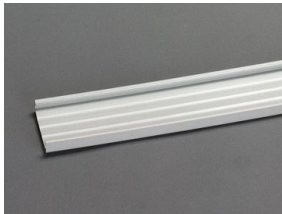
## Accessories



**01234**

end cover

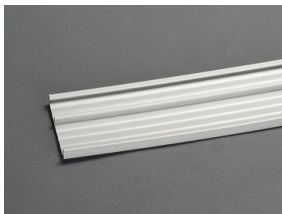
for busbar supports 01231 and 01232



**01236**

compartment section

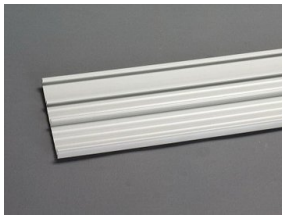
48 mm deep, 2.40 m long



**01237**

compartment section

76 mm deep, 2.40 m long



**01238**

compartment section

106 mm deep, 2.40 m long

2400 x 106



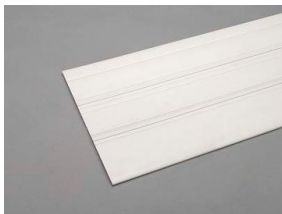
**01116**

busbar support

1-pole, to be attached to 01231 and individually mountable

double T profile

for busbars: double-T section



**01515**

base plate UL

240 x 700