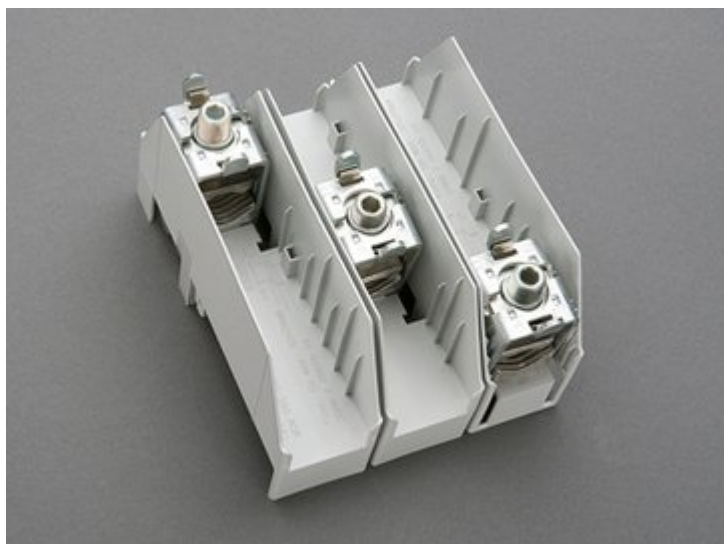


connection set, 3-pole, without cover (01537)



Description

Part No.: 01537

CRITO® 60Classic

connection set, 3-pole, without cover

95 - 300 mm², AWG 3/0 - 600 MCM

for busbars 20, 25, 30 x 5, 10 and section busbars

System

60Classic

Product group 07

Subgroup 51

pack size 1

EAN 4021267015374

Katalogseite US US 2019 : 3.5

eCl@ss 6.1 27141146
eCl@ss 7.1 27141146
ETIM 4.0 EC000001
ETIM 5.0 EC000001

Approvals

Standards

IEC 61439-1:2011
IEC 60999-1:1999
IEC 60999-2:2003
GB/T 7251.1

Approvals

CSA, UL, DNV GL



for UL feeder circuits >250V

type number: M300-L

UL file: E123577, UL category (for USA): NMTR <http://www.ul.com>

UL file: E123577, UL category (for Canada): NMTR7 <http://www.ul.com>

CSA file: 110285, CSA class: 3211-37 <http://directories.csa-international.org>

CCC approval: no certification required

Product data

Details IEC

Standards

IEC 61439-1:2011
IEC 60999-1:1999
IEC 60999-2:2003
GB/T 7251.1

Electrical data IEC

Rated current (IEC): 500 A

rated voltage (IEC) AC: 690 V

The insulation performance of the article depends on the installation conditions.

Supplementary data IEC

The following values have been verified with tests under certain conditions. Please ask Wöhner for this conditions before designing your panel.

max. permitted voltage (IEC) AC: 1000 V

max. permitted voltage (IEC) DC: 1500 V

current capacity (IEC) max.: 560 A

rated peak withstand current I_{pk} max.: 67.2 kA

Details UL

Standards

UL 508

for UL feeder circuits >250V

Electrical data UL

rated current (UL): 420 A

rated voltage (UL) AC: 600 V

SCCR unprotected max.: 22 kA

3 cycles (without OPD) @ 600 V AC

SCCR protected max.: 200 kA

fuse JDDZ Class J 600 A @ 600 V AC

SCCR: 100 kA / fuse Class L 1200 A @ 600 V AC

200 kA / fuse Class J 600A @ 600 V AC

200 kA / fuse Class L 800 A @ 600 V AC

Mechanical data

W x H x D: 153 x 184 x 115

weight: 155.5 kg/100

poles: 3-pole

for busbars: 20, 25, 30 x 5, 10 and section busbars

Terminal points

for applications acc. to IEC / EN :

Cu 95 - 300 mm² stranded round cables and stranded sectored cables as well as flexible cables (directly)

Al 120 - 300 mm² stranded round cables and stranded sectored cables

Al 120 - 240 mm² solid sectored cables

for applications acc. to UL / CSA :

Cu 95 - 300 mm² / AWG 3/0 - MCM 600

Material properties

Main body: temperature stability 125°C,
self-extinguishing in acc. to UL 94,
creepage resistance CTI 200

Cover: temperature stability 125°C,
self-extinguishing in acc. to UL 94,
creepage resistance CTI 200

Terminals: galvanised steel, chromited

screw: hexagon socket screw, galvanised, chromited

thrust piece: brass, nickel-plated

Version

Part no. 01 538 for flat conductors 32x20

Accessories



01539

cover cap, 3-pole

180 mm wide

180 x 200 x 90

for busbars: 12, 15, 20, 25, 30 x 5, 10 and section busbars



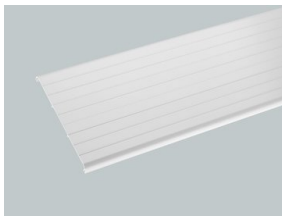
01540

cover cap, 3-pole

250 mm wide

250 x 200 x 90

for busbars: 12, 15, 20, 25, 30 x 5, 10 and section busbars

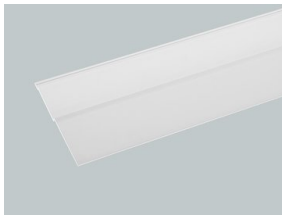


01554

compartment section, for 3-pole systems

front mounted, 1.10 m long, for holder 01136

3 x 190 x 1100

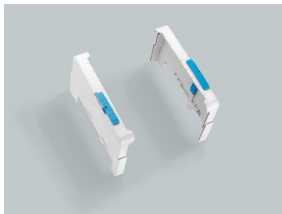


01555

cover section

top / bottom, 1.10 m long, for holders 01136 or 01137

3 x 109 x 1100



01136

set of holders for cover sections, for 3-pole busbar systems

set consisting of left and right holder, for covers 01554, 01555 and 01417

for busbars: 12, 15, 20, 25, 30 x 5, 10 and section busbars



01417

cover section

top / bottom, slotted, 1.10 m long, for holders 01136 or 01137

3 x 118 x 1100