

## NH fuse switch-discon. size 3, 630 A, panel mounting (33203)



### Description

Part No.: 33203

QUADRON<sup>®</sup> Panel

NH fuse switch-discon. size 3, 630 A, panel mounting  
screw M12

### System

Mounting plate

**Product group** 09

**Subgroup** 12

**pack size** 1

**EAN** 4021267332037

## Advantages of the product

Disconnectors are equipped with arc chambers.

The shock protection is split into 2 for safe connection of the conductors.

Self-closing inspection holes, which can be punched out, are available in the cover.

catalog page 2020 : 6.13

eCl@ss 6.1 27142108

eCl@ss 7.1 27142108

ETIM 4.0 EC001040

ETIM 5.0 EC001040

## Approvals

### Standards

IEC 60947-1:2007 + A1:2010 + A2:2014

IEC 60947-3:2008 + A1:2012 + A2:2015

GB/T 14048.3

### Approvals

IEC (CB) , UL , KEMA , CCC , DNV GL



for UL feeder circuits >250V

type number: LTS-3

UL file: E230163, UL category (for USA): IZLT2 <http://www.ul.com>

CCC certificate: 2004010302117263

## Product data

for fuse-links size: NH 3

fuse-link acc. to standard: IEC / HD 60269-2

permitted power dissipation of the fuse-link: 48 W

## Details IEC

### Standards

IEC 60947-1:2007 + A1:2010 + A2:2014

IEC 60947-3:2008 + A1:2012 + A2:2015

GB/T 14048.3

### Electrical data IEC

Rated current (IEC): 630 A

rated voltage (IEC) AC: 690 V

rated voltage (IEC) DC: 440 V

rated isolation voltage  $U_i$  AC: 800 V

rated isolation voltage  $U_i$  DC: 500 V

rated surge voltage  $U_{imp}$ : 6 kV

Utilisation category AC (IEC 60947-3): AC-23B (400V)  
AC-22B (690V)  
AC-21B (690V)  
AC-20B (1000V) at pollution degree 2

visible information required if used at more than 690V AC: do not switch under load

Utilisation category DC (IEC 60947-3): DC specifications: 2 current paths (L1,L3) in series  
DC-22B (440V)  
DC-21B (440V)  
DC-20B (1000V) at pollution degree 2

visible information required if used at more than 440V DC: do not switch under load

cond. short-circuit current with fuses (AC): 50 kA / 690 V

approved with fuse links of operation class: gG

rated short-time withstand current  $I_{CW}$  (1.0 s) max.: 15.1 kA

power dissipation of the article:

The power dissipation at a typical load of 80% of the rated current results to 23 W.

(The power dissipation for operation with rated current would be 36 W.)

### Supplementary data IEC

The following values have been verified with tests under certain conditions. Please ask Wöhner for this conditions before designing your panel.

max. permitted voltage (IEC) DC: 800 V

A fuse-combination unit acc. to IEC 60947-3 can only be operated at a higher voltage than its rated voltage, if it is used as a fuse-disconnector without breaking capacity, up to its max. rated insulation voltage and labelled as such.

rated peak withstand current  $I_{pk}$  max.: 35.2 kA

for fuse links IEC 60269-2-1 (I) / DIN VDE 0636-201 size 3 up to 48W power dissipation

Entsprechend den angegeben AC- und DC- Schalteigenschaften und unter Berücksichtigung der Überlastbedingungen, sind gewisse Abstände zu geerdeten Metallteilen einzuhalten. Nähere Informationen auf Anfrage.

Bei Verwendung als Trennschalter ist die Einhaltung der Abstände nicht erforderlich.

Degree of protection IP30 at front, degree of protection near terminal depends on installation

## Details UL

### Standards

UL 4248-1

for UL feeder circuits >250V

### Electrical data UL

rated current (UL): 600 A

rated voltage (UL) AC: 600 V

SCCR: 100 kA

### Mechanical data

W x H x D: 256 x 300 x 143

weight: 490 kg/100

poles: 3-pole

front degree of protection: IP30

### Terminal points

screw M12 :

Md 35 - 40 Nm

#### Accessories:

Clamp connection: Cu 150-300mm<sup>2</sup> s(r), f+AE; lam. Cu 25x1-13; 6-8Nm torque

single wedge clamp terminal: Cu, Al\* 150-300mm<sup>2</sup> s(r), s(s), f, f+AE; 6-8 Nm torque

double wedge clamp terminal: Cu 2x 150-185mm<sup>2</sup> s(r), s(s), f+AE; 6-8Nm torque

\*Connections are not maintenance-free if aluminium conductors are used.

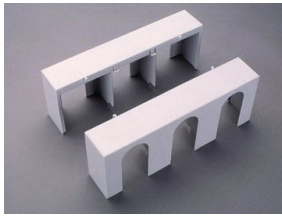
#### Material properties

Main body:	temperature stability 125°C, self-extinguishing in acc. to UL 94, creepage resistance CTI 600, halogen-free
Shock protection cover:	temperature stability 125°C, self-extinguishing in acc. to UL 94, creepage resistance CTI 200
Handle:	temperature stability 125°C, self-extinguishing in acc. to UL 94, creepage resistance CTI 200, halogen-free
Contacts:	spring-loaded copper contacts, silver plated

#### Version

Variant with electronic fuse monitoring: 33 332 Variant with electromechanical fuse monitoring: 33 151

## Accessories



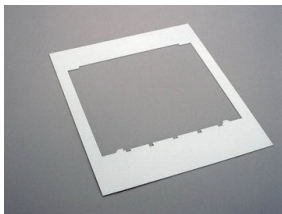
**33144**

cover for cable lugs, top / bottom attachable  
for QCB-NH3



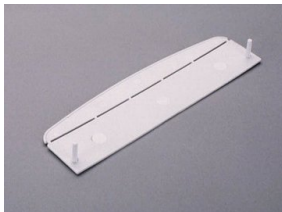
**33147**

prism terminal, double, for Cu cables  
2x 150 mm<sup>2</sup>  
size 3



**33154**

trim frame, single  
290 x 330  
size 3



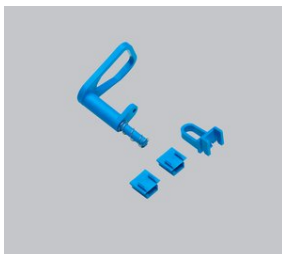
**33155**

barrier for handle for NH fuse-switch disconnecter size 1-3  
for closing of handle area from rear



**33156**

pilot switch  
changeover 250 V AC / 5 A, 30 V DC / 4 A



**33157**

lid interlock  
for sealing wire or 3 padlocks with shackle of 4 - 7 mm  
Size 1 - 3



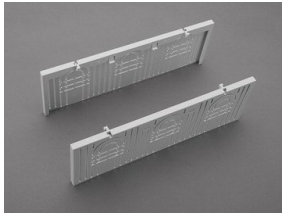
**33165**  
clamp connector for Cu cables  
150 - 300 mm<sup>2</sup>  
QCB-NH3, LTS-F 630, LTS 800



**33168**  
prism terminal, single, for Cu and Al cables  
150 - 300 mm<sup>2</sup>  
size 3



**33385**  
prism terminal, double, for Cu cables  
2x 185 mm<sup>2</sup>  
size 3



**33419**  
connection shroud  
for NH fuse-switch-disconnector size 3, max. 600 A