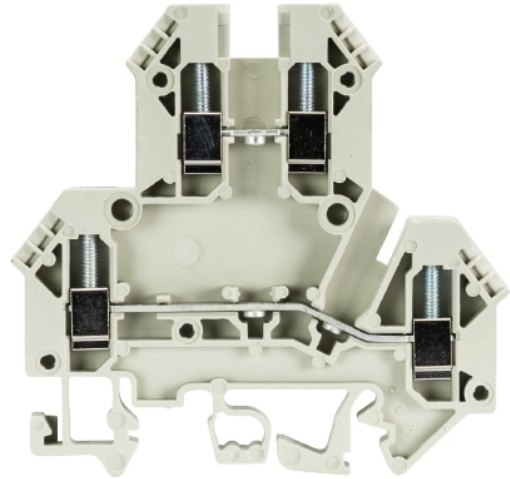


Data sheet

Commercial Art.No.: 57.403.7055.0

multi-tier terminal WKN2,5E / U V0

Duo Feed-through terminal with Screw connection for mounting on TS 35/ TS 32,
nominal cross section: 2.5 mm², width: 5 mm, color: grey



Commercial Art.No.	57.403.7055.0
EAN	4015573544819
Order Unit	100

certificates / approvals



USA-Ex

Technical data

general

nominal cross section	2.5 mm ²
color	grey
number of levels	2
number of clamp positions per level	2
width/grid dimension	5 mm
insulating housing	PA666
flammability class of insulation material acc. with UL94	V0
explosion-tested version "Ex e"	no
mounting method	DIN rail (top hat rail)/G-rail
terminal blocks for electrical installations	no

technical data

rated current	24 A
rated voltage	500 V
rated impulse voltage	6 kV
pollution degree	3
closing plate required	yes
type of insulation material	thermoplastic
length	65.8 mm

connection data

connection type 1	screw connection
-------------------	------------------

connection type 2	screw connection
minimum cross section solid	0.2 mm ²
maximum cross section solid	4 mm ²
minimum cross section fine stranded	0.14 mm ²
maximum cross section fine stranded	2.5 mm ²
wire strip length	8 mm
torque conductor mounting	0.4 Nm

technical data UL/CSA

cross section UL	22-12 AWG
voltage UL	600 V
current factory wiring	25 A
current field wiring	20 A
cross section CSA	24-12 AWG
voltage CSA	600 V
current CSA	25 A

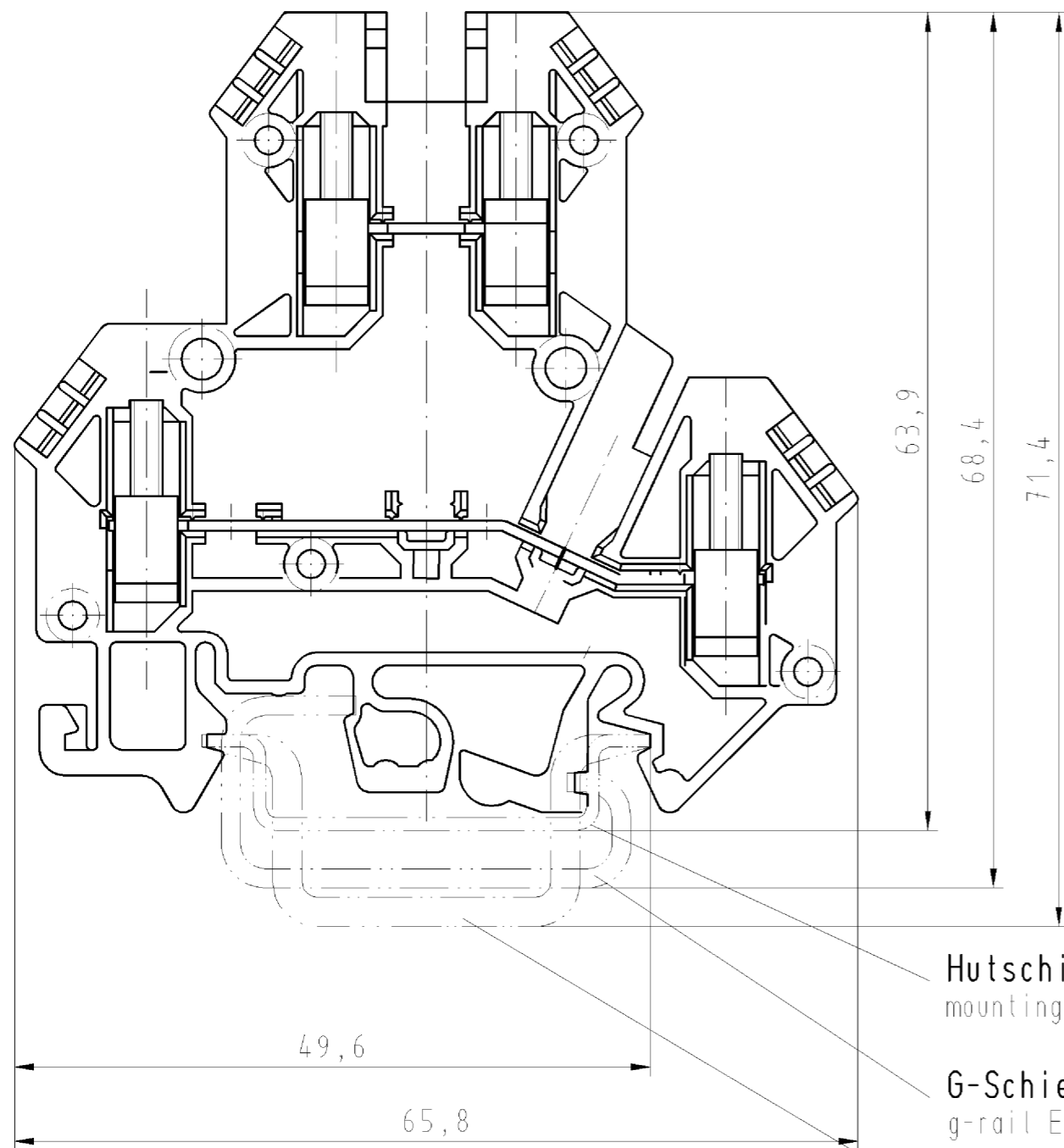
classification

ECLASS 11	
ECLASS 8.1	27141120
ETIM 9.0	EC000897
ETIM 8.0	EC000897
ETIM 7.0	EC000897
ETIM 6.0	EC000897
ETIM 5.0	EC000897
ETIM 4.0	EC000897
ETIM 3.0	EC000897

product compliance

ROHS conformity status	compliant/exempted
ROHS exceptions	III-6(c)
REACH-SVHC conformity status	Duty-To-Declare
REACH-SVHC substances	Lead
REACH-SVHC CAS numbers	7439-92-1

○ Diese Maße werden bei Abnahme besonders geprüft
 ○ Ausschließlich Prüfmaße
 M1, F gekennzeichnete Maße sind nur für interne Zwecke gültig



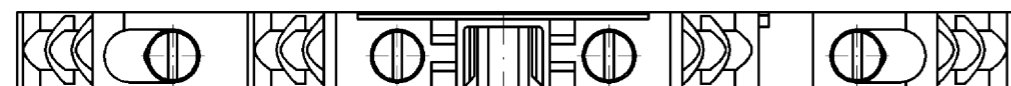
Hutschiene EN 60715-35x7,5
 mounting rail EN 60715-35x7,5

G-Schiene EN 60715-G 32
 g-rail EN 60715-G 32

Hutschiene EN 60715-35x15
 mounting rail EN 60715-35x15

Teile-Nr./part nr.	Farbe/colour	Typ/type
57.403.7055.0	grau/grey	WKN 2,5 E/U V0
57.403.7055.8	gelb/yellow	WKN 2,5 E/U V0 GELB

Weitere Daten siehe Katalog
 further data see catalog



Freitoleranz nach -		CAD - Zeichnung, keine manuellen Änderungen			1. Verwendung: -		Bl.: 1 von 1		
	Maßstab	-		2003	Tag	Name		Zeichnung Nr. 57.403.7055.0 01K	Index
	2:1			Entworfen	14.05.	Schmitt J.			
				Geprüft	-				
	Vol.	mm ³	011.	mm ²	Normgepr.	-	Ersatz für: -		
Buchstabe		Datum / Blatt		Änderung		Benennung		ETAGENKLEMME modular double-deck terminal	
				WKN 2,5 E/U					

Weitergabe sowie Vervielfältigung dieses Dokuments, Verwertung und Mitteilung seines Inhalts sind verboten, soweit nicht ausdrücklich gestattet.
 The reproduction, distribution and utilization of this document as well as the communication of its contents to others without express authorization is prohibited.

A
1
2
3
4
5
6
7
8
9
10
11
12
13
14
15
16
17
18
19
20
M1
M2
M3
L
G
1.1
2.1
1.1